

Durham Road, West Wimbledon SW20 0DG



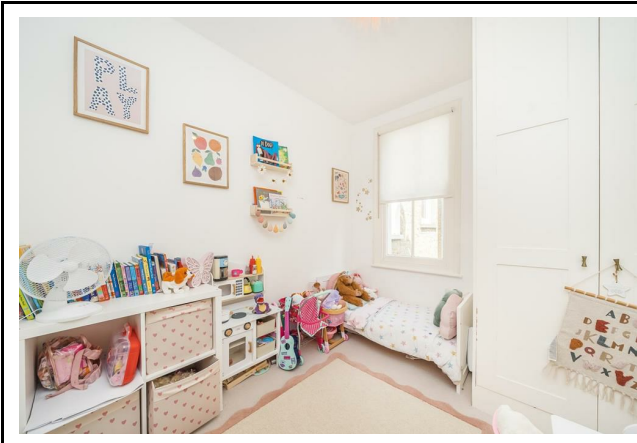
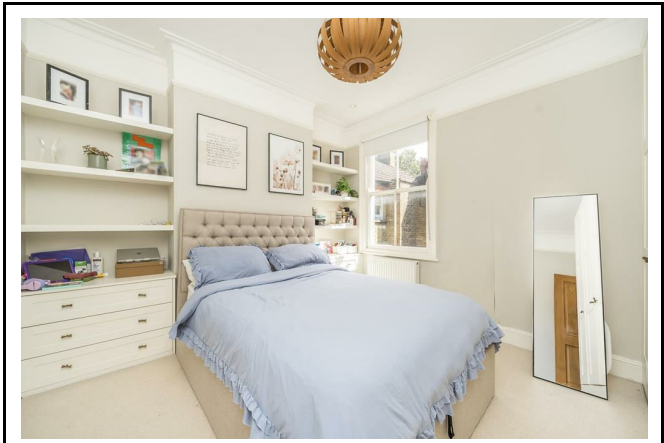
£2,250 PCM

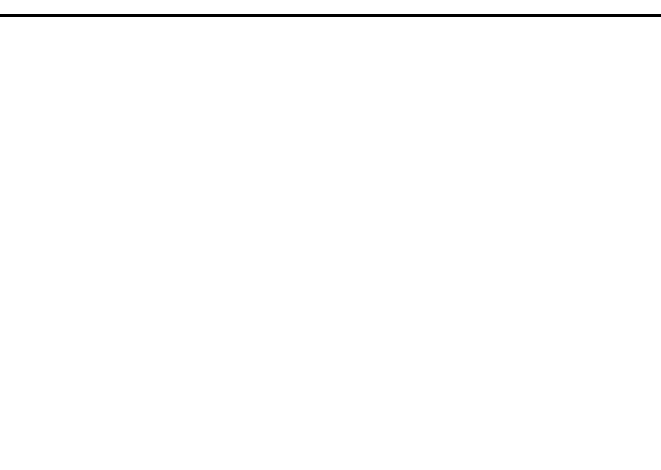
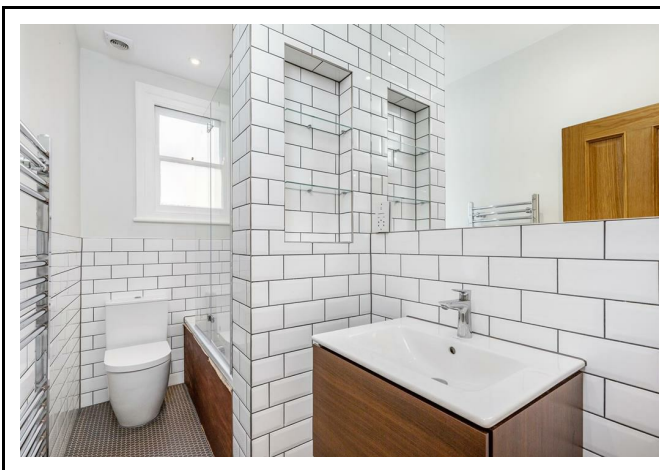
Bright and well presented three bedroom first floor period maisonette with private garden close to Raynes Park station, shops and local parks. Accommodation comprises,, lounge with a large bay window and feature fireplace, stylish fitted kitchen/ breakfast room with access to garden, three bedrooms, two with fitted wardrobes, modern bathroom with bath and overhead shower. Available 26th August - Unfurnished - EPC rating D - Council Tax Band D - Holding Deposit £519.00 - Total Deposit £2,595.00

020 8971 6780
24 High Street, Wimbledon Village, SW19 5DX

Location:

Durham Road is a highly sought after tree lined residential road conveniently placed for the many amenities of Raynes Park including shops, restaurants, bars and Waitrose supermarket. The mainline station on the high street offers frequent and direct train services into Central London and the West End. The popular Hollymount primary school is close by and both Wimbledon town centre and Wimbledon Village are easily accessible.





Durham Road

Approximate Gross Internal Area = 848 sq ft / 78.8 sq m



This plan is not to scale and must be used as layout guidance only. All measurements and areas are approximate and should not be relied upon to provide accurate information. This plan must not be relied upon when making property valuations, design considerations or any other such relevant decisions. We accept no responsibility or liability (whether in contract, tort or otherwise) in relation to any loss whatsoever arising from or in connection with any use of this plan or the adequacy, accuracy or completeness of it or any information within it.

EPC Rating D
Council Tax: D



Viewing Strictly By Appointment Through Sole Selling Agents Andrew Scott Robertson

Note: andrew scott robertson for itself and for the vendors or lessors of this property whose agents they are give notice that:

- (i) the particulars are set out as a general outline only for the guidance of intending purchasers or lessees, and do not constitute, nor constitute part of, an offer or contract
- (ii) all descriptions, dimensions, references to condition and necessary permissions for use and occupation, and other details are given in good faith and are believed to be correct but any intending purchasers or tenants should not rely on them as statements or representations of fact but must satisfy themselves by inspection or otherwise as to the correctness of each of them;
- (iii) no person in the employment of andrew scott robertson has any authority to make or give any representation or warranty whatsoever in relation to this property.

We are here to help you find your next home. Prior to viewing we recommend that you discuss any particular points which are likely to affect your interest in the property with a member of staff who has seen the property in order that you do not make a wasted journey. If you would like to view the property or require further information please call: 020 8971 6780